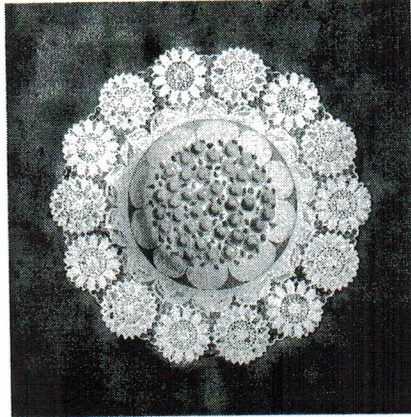


456 GALLERY, Chinese-American Arts Council

456 Broadway, 3rd Floor, New York, NY 10013



Chiu-Jhin Chen, Cherries & Raisins Cake, 2005, Watercolor, 19 x 19 inches

Chiu-Jhin Chen

TINA'S BAKERY

July 1- July 20, 2005

Gallery Hours: Mon- Fri, 12- 5 pm

Opening reception, Friday, July 1, 6-8 pm

456 Gallery will present paintings by artist Chiu-Jhin Chen. The exhibition opens Friday, July 1, from 6-8 pm, and continues through July 20, 2005.

In her first New York solo exhibition, Chiu-Jhin Chen will show a series of works produced in the USA between 2003 to 2005. Her watercolors are made on both Western and Asian papers.

The exhibition's title "*Tina's Bakery*" suggests metaphors of culture and gender. The paintings are sensuous arrangements of traditional Taiwanese rice cakes, Japanese pastries, American snacks and doughnuts, and confections from the artist's imagination. In the Taiwanese traditional bakery, some cakes suggest the shapes of women's breasts and buttocks. Chen's works play with these shapes to evoke deep cultural and religious meanings, and at the same time her paintings remind consumers' of the visual stimulation that motivates the consumption of sweets. Chiu-Jhin Chen says that although she has painted some of her works from actual pastries, she wants viewers to bring their own ideas to the paintings. Viewers from the East and West might share some interpretations and disagree on others. In *Tina Bakery* meanings are personal and cultural, and, perhaps for some viewers, meaning may be pervaded by the politics of gender.

Chiu-Jhin Chen was born in Taiwan. She is Professor of Art at Taipei Municipal Teachers College in Taiwan and currently she is also a Visiting Scholar in the School of Visual Arts at Penn State University, Pennsylvania [2003-2005]. Many of her American friends call Chiu-Jhin "Tina," which explains the exhibition's title "*Tina's Bakery*".